



VISITORS GUIDE
OZONA
Texas



Hang Your Hat in History!



(325) 392-3737 • oztxcoc@aol.com

Ozona.com • Facebook.com/OzonaChamber

WELCOME TO *Texas*

GET OFF THE INTERSTATE and stop by the Ozona Chamber of Commerce and Visitor Center Park to stretch your legs. Let us share information about lodging, dining, and any number of local services. Browse through brochures on communities and attractions within a 300 mile radius of Ozona. The center features a conference center, 24-hour restrooms, visitor information and Chamber of Commerce operations.





WHAT'S INSIDE

Ozona Overview	2
Ozona & The Texas Pecos Trail	4
Area Attractions	5
Area Map	5
History Lives Around Every Corner	6
<i>Davy Crockett Monument, Crockett County Courthouse, "The Tie That Binds" Sculpture, Crockett County Museum</i>	
Step Back In Time	8
<i>Fort Lancaster State Historic Site, Crockett County Historical Markers</i>	
Rugged Beauty	9
<i>Lancaster Hill Scenic Drive and Observation Point</i>	
Hospitality Reigns	10
<i>Food and Fun</i>	
Family-Friendly	11
<i>Escondido Draw Recreation Area</i>	
Fly Into Ozona	12
<i>About the Ozona Airport</i>	
Plan An Overnight	13
<i>Where to Stay in Ozona</i>	



OZONA OVERVIEW

Crockett County is the eighth largest county in Texas covering 2,807 square miles with over 1,800,000 acres of land. The major land use is rangeland. Sheep, Angora goats, and cattle comprise the majority of the range economy, which is supplemented by oil and gas, and hunting leases.

Traveling across Texas on Interstate 10, you will find few things to distract you from this land that seems to go on forever! Then, halfway between El Paso and San Antonio, you will discover Ozona, a community of 3,700. Organized in 1891, Ozona is the only town. The county was named after the Alamo hero David Crockett.

Situated in the Edwards Plateau Region, the land varies from wide valleys and steep hills to canyons carved out by the Pecos River. Prehistoric Native Americans lived in the area many years before the Spanish explorers arrived. With altitudes ranging from 1,500–2,500 feet above sea level, it is a dry and healthful place.

Located on the town square is a sign that reads "Ozona — Biggest Little Town in the World", a representation of the amount of oil and gas produced in Crockett County. The first oil well





SANDRA CHILDRESS

was drilled in 1925 (followed by gas in 1927) creating a boom for the county. Stately homes built in the twenties can still be seen along Silk Stocking Row.

Crockett County is home to some of the most fascinating species of wildlife and unusual variety of plants. Both plants and animals seem to

“Hang your Hat in History” with a visit to our local museum or one of many historic markers touting the rich history of the town.

be designed for endurance and tenacity. Their beauty lends a delightful accent to this vast and rugged country, not meant for the faint of heart!

With an abundance of land, hunting provides an income for many landowners. The town, located just off of Interstate 10, also sees its fair share of travelers seeking a place to stop on their way to their destination, only to find a warm and welcoming community along the way.

Ozona — a small town with a variety of activities for the whole family!





OZONA & THE TEXAS PECOS TRAIL

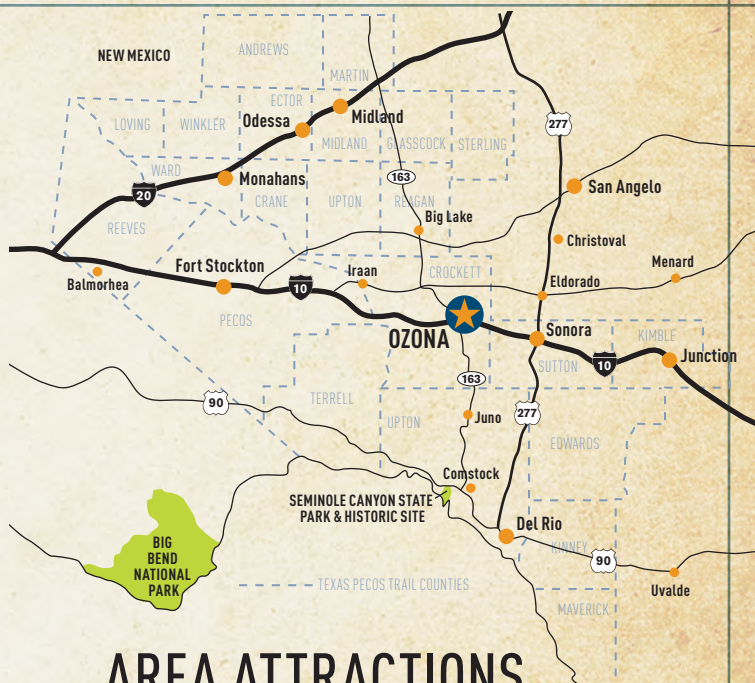
Experience the legendary Wild West of classic books and movies, and the real-life landscape of the Texas Pecos Trail Region. Twenty-two counties cover 35,000 square miles and comprise an ecological transition zone at the junction of the Plains to the north, Edwards Plateau in the east, Chihuahuan Desert in the west, and the Brush Country in the south. The Texas Pecos Trail Region allows visitors to experience our rich and diverse Western heritage, including Native American rock art, cowboys and ranching, military forts, Hispanic culture, the Permian Basin Oil Boom of the 20th century, World War II training bases and artifacts, museums, county courthouses, a variety of unique and spectacular natural wonders, and outdoor recreation.

➤ www.texaspecostrail.com



Be sure to pick up or go to tpwd.texas.gov for a Texas Parks & Wildlife Heart of Texas West Map, which includes Crockett County, Ozona and 103 attractions, wildlife sites and trails.





AREA ATTRACTIONS

There are many local and area attractions that you can visit making Ozona your home base. Book your overnight stay with us and plan a day trip for the whole family. Visit Ozona.com and click on the Tourist Info tab. Then click the Travel Itineraries page to plan your adventure lasting from 2 hours or the entire day!

Twistflower Ranch (Big Lake)	30 mi.
Caverns Of Sonora (Sonora).....	34 mi.
Old Ice House Ranch Museum (Sonora)	36 mi.
Eaton Hill Wildlife Sanctuary (Sonora).....	36 mi.
X Bar Ranch Nature Retreat (Eldorado).....	28 mi.
Pandale River Crossing (Pandale-ghost town)	48 mi.
Jarrett Juno Ranch (Juno)	50 mi.
Alley Oop and Dinny the Dinosaur (Iraan)	55 mi.
Hummer House (Christoval)	73 mi.
Fort McKavett State Historic Site (Menard County)	76 mi.
Christoval Vineyards (Christoval).....	81 mi.
Shumla Archaeological Research & Education Center (Comstock)	82 mi.
Mount Carmel Hermitage (Christoval)	83 mi.
Pecos River Highway Bridge (NW of Comstock)	93 mi.
Seminole Canyon State Park & Historic Site (near Comstock).....	93 mi.
Presidio de San Saba (Menard)	98 mi.
Devil's Sinkhole State Natural Area (Del Rio).....	102 mi.
Judge Roy Bean Visitor Center (Del Rio).....	110 mi.



HISTORY LIVES AROUND EVERY CORNER



DAVY CROCKETT MONUMENT

David Crockett was born in Tennessee on August 17, 1786 and he died, a hero, at the Battle of the Alamo in San Antonio, Texas on March 6, 1836. A memorial to David Crockett stands at the south end of Ozona's town square. Our county, formed in 1875, was named in honor of the Texas hero.

The statue was placed on its base on December 31, 1938. The granite statue was carved from two slabs of granite weighing nearly 20 tons. Inscribed at the base of the statue is Crockett's motto, "Be sure you are right, then go ahead." Visitors from throughout the world have been photographed at the Davy Crockett Monument.

CROCKETT COUNTY COURTHOUSE

Designed by Texas pioneer architect, Oscar Ruffini, this American Gothic style building was completed in 1902 for a cost of \$30,000 and replaced the earlier wooden frame courthouse. Listed on both the U.S. National Register of Historic Places and the Recorded Texas Historic Landmarks, this building served the local county government and was also an early gathering place for community functions, including cowboy dances, box lunches, and roundup celebrations. The limestone materials used to construct the courthouse were quarried from the local Myers and Couch estates. Still used in county government today, the



building underwent a total restoration that was completed in 2011. Located on the town square, the courthouse is just one of several buildings in the area recognized with Texas historical markers.

“THE TIE THAT BINDS” SCULPTURE

This is a memorial to the pioneer families that came to settle this land and those that followed. It serves to remind us of the determination and perseverance these ancestors embodied as they looked ever westward until settling here in Crockett County. It was sculpted by Judy Black, a native of Crockett County, and is cast in bronze in life-and-a-quarter size. It may be found in the center of the town square.

CROCKETT COUNTY MUSEUM

Dedicated to sharing and preserving history, featuring an award winning Indian Exhibit, visitors will leave this museum feeling as if they have truly traveled through time. This three story period museum with its general store, bank room, saddle room, school room and many other exhibits, depict so clearly the heritage of this region and the way of life once lived by so many before us.

➤ www.ozonamuseum.com



STEP BACK IN TIME



FORT LANCASTER STATE HISTORIC SITE

One of four posts established in 1855 to protect the military route between San Antonio and El Paso. Visitors may wander through the ruins of the park still standing guard over the Pecos River valley. Located 33 miles west of Ozona off State Highway 290, in Crockett County, travelers can also stop at an observation point for a spectacular view of a valley once roamed by pioneers, Native Americans, Spanish explorers and soldiers.

➤ www.visitfortlancaster.com

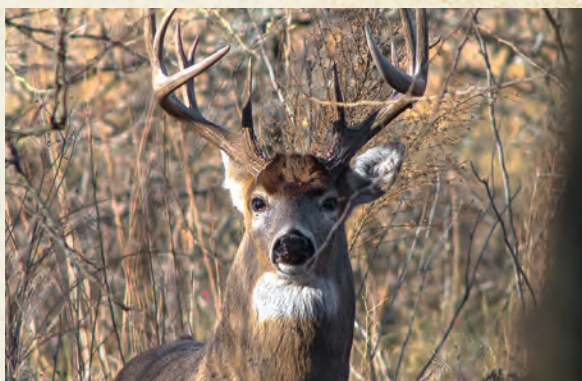
CROCKETT COUNTY HISTORICAL MARKERS

Ozona and Crockett County are rich in history. With dozens of historical markers commemorating events dating back centuries throughout the county, you can take a step back in time. Travel to these markers and find yourself standing in the places visited by Native Americans, Spanish explorers, soldiers and pioneers.

➤ www.Ozona.com (look under Tourist Info)



RUGGED BEAUTY



Ozona is a nature lover's delight with fiery dawns and calming dusks. A landscape with red blooms of prickly pear and abounding with wildlife has helped make Crockett County a hunter's paradise, where the air is clean and the skies are clear.

LANCASTER HILL SCENIC DRIVE AND OBSERVATION POINT

About 30 miles west of Ozona you can enjoy a breathtaking view of the Pecos River Valley from the roadside picnic area and observation point, then drive the winding road to the bottom of the valley where you will see a narrow metal overhead truss bridge as you cross the famous Pecos River. Along the way, you will pass the Fort Lancaster State Historic Site listed below. Take I.H. 10 West to Exit 343, then turn left onto Texas Highway 290 West toward Sheffield. The picnic area and observation point are just minutes away.



CROCKETT COUNTY INTERPRETIVE TRAIL

This exhibit is an interpretation of plant material in its native habitat within a 100 mile radius of Ozona. The trail includes a Rain Harvest Exhibit with signage on the process of collecting water for landscaping, livestock watering or home use. There is also a wildlife viewing area and a watering hole for birds and butterflies. Located at the Ozona Chamber of Commerce and Visitor Center (the intersection of I.H. 10 and State Hwy 163 S).

HOSPITALITY REIGNS



Out here, eating is a pleasure! Dig into a nice juicy steak, enjoy some good ole home style cooking, or authentic Mexican food. Temptation is all around. Visit Ozona.com for a list of local restaurants.

CROCKETT COUNTY
INTERPRETIVE
TRAIL



FAMILY-FRIENDLY



Ozona's Town Square is one of beauty, charm and warmth. This is a spot for locals and visitors alike. Just relax

and enjoy the feel and sound of a West Texas breeze rustling through tall pecan trees, or the sound of music from the Gazebo. The square is home to the **Tie That Binds Sculpture**, a memorial to pioneer families, and to the **Davy Crockett Monument** whose name the county bears.

Whether celebrating a local festival or enjoying a quiet afternoon by the pool, Ozona is a quiet rural community where you will stop as a stranger, and leave as a friend. Ozona residents extend their heart and hand, making you feel right at home.



ESCONDIDO DRAW RECREATION AREA

The Escondido Draw is a 3,400-acre, off-road vehicle recreation park. Located near Fort Lancaster State Historic Site, the park is open to all-terrain vehicles, off-road motorcycles and full-sized, four-wheel-drive vehicles. The park is open Fridays and Saturdays. It offers extensive trails for off-roading, as well as hiking, birding, and nature trails.

- www.escondidodraw.org
- www.texasmotorizedtrails.com



FLY INTO OZONA



The airport is located one mile north of Ozona. In 1998, a \$2.4 million federal grant was used to upgrade the runway, taxiway, and lighting system. The all-weather hot mix asphalt runway is 6,000 feet in length, 75 feet wide, and will accommodate any aircraft weighing up to 70,000 lbs. There is a very large parking area and radio-controlled lights for strong illumination. G.P.S. IFR Approach OZA (KOZA)

Ozona is located on I.H. 10 halfway between El Paso and San Antonio. There are no city taxes, making Ozona a good place to relocate or start any kind of Airplane Engine or Airframe Modification Business. Ozona's dry, moderate weather and climate make it an excellent area for flying. The airport is surrounded by several acres of land available for additional hangar space, large or small, and is close to an industrial park area.

Services located at the airport include:

- AV gas and jet fuel
- Aircraft inspections
- Pilot services
- Major and minor airframe and engine repair
- Telephone

Fixed Base Operator: McCleary Aircraft

325-392-2030

325-226-2628 after hours or on weekends



PLAN AN OVERNIGHT

TRAVEL ITINERARIES @ OZONA.COM

AMERICAS BEST VALUE INN

Loop 466W
Exit 363 or 365
820 11th St.
325-392-2631
or 888-315-BEST
➤ americasbestvalueinn.com

ECONOMY INN & RV PARK

Off I-10, Exit 365
1103 Ave. A
RV Park:
24 pull-through sites
325-392-3394

ENCINO RV PARK

1308 Ave. A
325-392-2142 or 392-2701

HAMPTON INN

Off Exit 365
816 14th St.
325-392-1449
➤ hamptoninn.com

HILLCREST INN & SUITES

Off I-10, Loop 466 W
Exit 363 or 365
1204 Sheffield Rd.
325-392-4000

HOLIDAY INN EXPRESS

I-10 Exit 365
1308 Ave. E
325-392-9000
➤ hiexpress.com

QUALITY INN – OZONA

I-10, Exit 365
1307 Ave. A
325-392-3791
➤ bestwestern.com

SOUTHRIDGE RV PARK

268 South Highway, 163 S
210-776-3209
or 936-632-7362

SUPER 8 MOTEL & RV PARK

Off I-10, Exit 372
3330 I-10 East
RV Park:
96 pull-through sites
325-392-2611
➤ super8.com

TRAVELODGE

Loop 466 or Hwy. 290 E
Exit 365
8 11th St.
325-392-2656
➤ travelodge.com

OZONA CHAMBER OF COMMERCE
AND VISITOR CENTER
P.O. BOX 1135 • 505 15TH ST.
OZONA, TX 76943

(325) 392-3737
OZONA.COM



OZONA *Texas*

